



Easy Picker Golf Products, Inc.

415 Leonard Blvd. N., Lehigh Acres, FL 33971

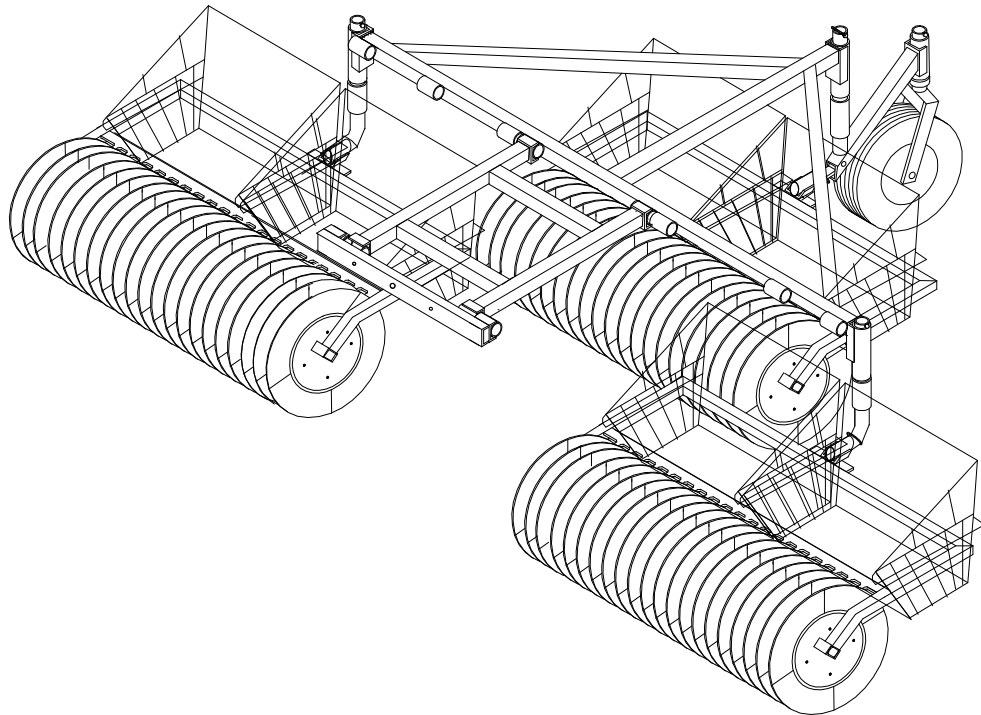
PH: 239-368-6600 FAX: 239-369-1579

Service: 800-982-4653 SALES: 800-641-4653

www.easypicker.com salesdept@easypicker.com

INSTALLATION and OPERATION

MODEL NO. EP-028AH THRU EP-030AH



Please keep this manual with the picker for future reference.

Table of Contents

Introduction.3
Specifications.3
Warranty Policy3
Inspection3
Installation4
Operating Instructions.4
Periodic Inspection and Maintenance5
Parts List7
Disc Replacement Procedure8

List of Figures

Figure 1: Highrise Picker Assembly.6
---	----

List of Tables

Table 1: Inspection Guide.5
------------------------------------	----

Introduction

Welcome to the Easy Picker family. We know you'll find our equipment to be of the highest quality. We are sure you will enjoy many seasons of reliable use. Easy Picker's range ball picker is designed to be low maintenance and is manufactured at our own facility to ensure utmost quality.

The Easy Picker range ball picker is constructed of heavy-duty square steel tubing. All exterior surfaces are treated to resist rust and corrosion, then sealed with an epoxy coating to ensure long life. The baskets are constructed of heavy gauge wire which are rubber coated to ensure long life. Our discs are made of heavy duty plastic with UV (Ultra Violet) light protection to ensure long life.

This manual contains instructions for operation and maintenance for the range ball picker, designed and manufactured by Easy Picker Golf Products, Inc., 415 Leonard Blvd. N., Lehigh Acres, FL 33971

Specifications

Model number	# Gangs	Dimensions	Weight
EP-028AH	3	9' W X 26" H 2.74 m W X .66 m H	256 lbs 116 kg
EP-029AH	5	15' W X 26" H 4.57 m W X .66 m H	395 lbs 179 kg
EP-030AH	7	21' W X 26" H 6.40 m W X .66 m H	500 lbs 226.6 kg

Warranty

Easy Picker Golf Products, Inc., warrants this product against defects in materials and workmanship for a period of ONE YEAR from the date of purchase. This warranty EXCLUDES any malfunction or damage due to customization and/or abnormal use of the product or product operation not in compliance with the OPERATING INSTRUCTIONS section of this manual.

Inspection

Within one (1) business day of delivery, remove outer protective packaging from range ball picker and inspect for any damage which may have occurred during transit . If damage has occurred, **DO NOT** remove range ball picker from shipping pallet or discard any packaging materials removed during inspection. Notify the freight carrier immediately to arrange a claim and inspection. Also, notify Easy Picker Golf Products, Inc. of damage. Failure to perform any of the above procedures in a timely fashion may compromise any warranty coverage by either the freight carrier and/or Easy Picker Golf Products, Inc.

Installation

Remove outer protective packaging from range ball picker and inspect for any damage which may have occurred during transit if any damage, **DO NOT** remove range ball picker from shipping pallet or discard any packaging material removed during inspection. Notify the freight carrier immediately to arrange a claim or inspection. Also notify Easy Picker Golf Products of any damage. Failure to perform any of the above procedures in a timely fashion may compromise any warranty coverage by either the Freight Company or Easy Picker Golf Products Inc.

SEE FIGURE 1 (PAGE 6) TO IDENTIFY PARTS

- Attach hitch adapter to drive source. If using golf cart adapter, install adapter to cart per installation instructions supplied.
- Attach power hitch to A-frame using 5 ½" extension pins and fasteners.
- Install wheel assembly to A-frame using fasteners supplied.
- Attach gang assembly to tongue pin, located behind wheel assembly with elbow bushings on fastener side of pin.
- Attach elbows to A-frame with elbow bushing on top fastener side of elbow.
- Attach gang assembly to bottom side of elbow with elbow bushing on fastener side of pin.
- Attach extensions to A-frame using 12" extension pins and fasteners.
- Attach elbow to extension end with elbow bushing on top fastener of elbow topside.
- Attach gang assembly to bottom side of elbow with elbow bushing on fastener side of pin.
- Attach power hitch to hitch adapter using 24" pin using lock pin supplied. When securing adapter to power source, make sure it fits flush and cannot rock.

Operating Instructions

- Maximum operating speed is less than 9 miles per hour.
- Use straight line, overlapping pattern for range ball picking typical of mowing grass.
- Never back up with range ball picker.
- Do not overfill baskets.

Periodic Inspection and Maintenance

Periodic inspection and maintenance of the range ball picker is necessary for optimum operation and to prevent breakdown of the equipment. These procedures must be performed regularly and thoroughly. Through normal inspection and maintenance, the equipment is ready for operation when necessary and will deliver peak performance for the maximum service life of the machine.

The periodic inspection and maintenance requirements for the various components of the range ball picker are listed in the following table. This table gives the inspection interval inspection point, inspection procedure and service for remedy of defects revealed during inspection. All defects should be corrected when discovered.

TABLE 1: INSPECTION GUIDE

Inspection Interval	Inspection Point	Inspection Procedure And Service
Daily	Machine	Check exterior for evidence of physical damage, loose hardware. Tighten and/or repair as necessary.
Weekly	Front wheel assembly/elbows	Check lubrication in wheel fork and wheel, grease as needed. Use spray lithium on elbow connections.
Monthly	Disc assembly	Check for endplay and/or loose disc rods. See disc replacement procedure.
	All steel parts	Use T-9 for rust protection

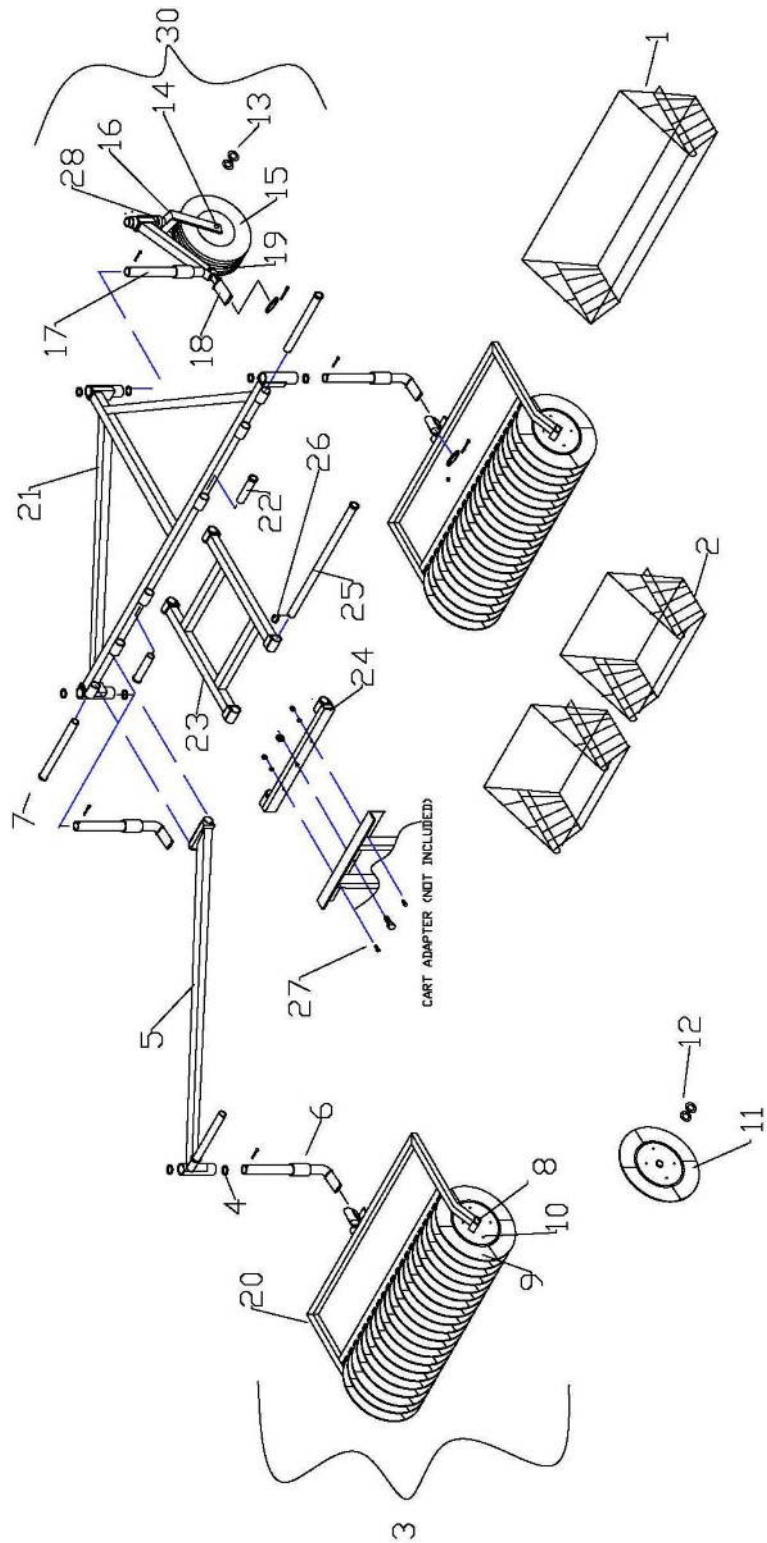


FIGURE 1: HIGH-RISE PICKER ASSEMBLY

HIGH-RISE PICKER ASSEMBLY PARTS LIST

ITEM	QTY	PART NO.	DESCRIPTION
1	1	EP-020X	Basket, long high back
2	1	EP-020AX	Basket, short high back
3	1	EP-037	Gang assembly, complete (8, 9, 10 & 20)
4	1	EP-017	Bushing, elbow
5	1	EP-009B/EP-009A	Extension arm, left /Extension, arm right
6	1	EP-016HR	Elbow, high rise
7	1	EP-007	Pin, extension 12"
8	1	EP-015	Axle, disc assembly
9	1	EP-200	Disc set, assembly
10	1	EP-010	Rod set, disc not included
11	1	EP-019AA	Disc, replacement
12	1	EP-014	Bushing, disc axle
13	1	EP-024	Bushing, wheel axle
14	1	EP-023	Axle w/nut, wheel
15	1	EP-027S	Wheel
16	1	EP-021H	Fork, wheel
17	1	EP-022HR	Holder, fork high-rise
18	1	EP-025	Tongue
19	1	EP-023	Bolt w/nut, tongue
20	1	EP-011	U-frame
21	1	EP-001	A-frame
22	1	EP-006	Pin, extension 5 1/2"
23	1	EP-002	Hitch, power
24	1	EP-003	Adapter, hitch
25	1	EP-005	Pin, hitch 24"
26	1	EP-005L	Pin, locking for 24"pin
27	1	EP-004	Hardware, hitch adapter
28	1	EP-017H2	Bushing, fork
29	1	EP-H50	Plate, High Rise (Older models only – Before 08/2008)
30	1	EP-101H	Wheel Assembly, (13, 14, 15, 16, 17, 18, 19 & 28)

Disc Replacement Procedure

1. Remove fastener from disc axle, pull axle out of u-frame and disc assembly.
2. Remove lock nuts from one side of rod ends.
3. Remove disc(s) and replace with new disc(s).
4. Reinstall good discs, using disc axle as a centering guide, until a total of 21 discs are installed. Keep same end disc in position removed. If end disc must be replaced, then remove the four spacers. Trim disc axle boss to fit u-frame leaving enough clearance for axle bushing.
5. Insert all four disc rods into through holes (if removed). Use disc axle for proper centering of all discs.
6. Attach first set of locknuts to disc rod ends using even torque on each rod. Install backup locknuts to disc rod ends.
7. Center disc assembly with u-frame teeth between each disc opening. Use axle bushings at each end of disc assembly to fill gap between disc assembly and u-frame.
8. Use dry graphite on disc axle and insert through u-frame, disc axle bushings and disc assembly. Install disc pin and lock nut.

